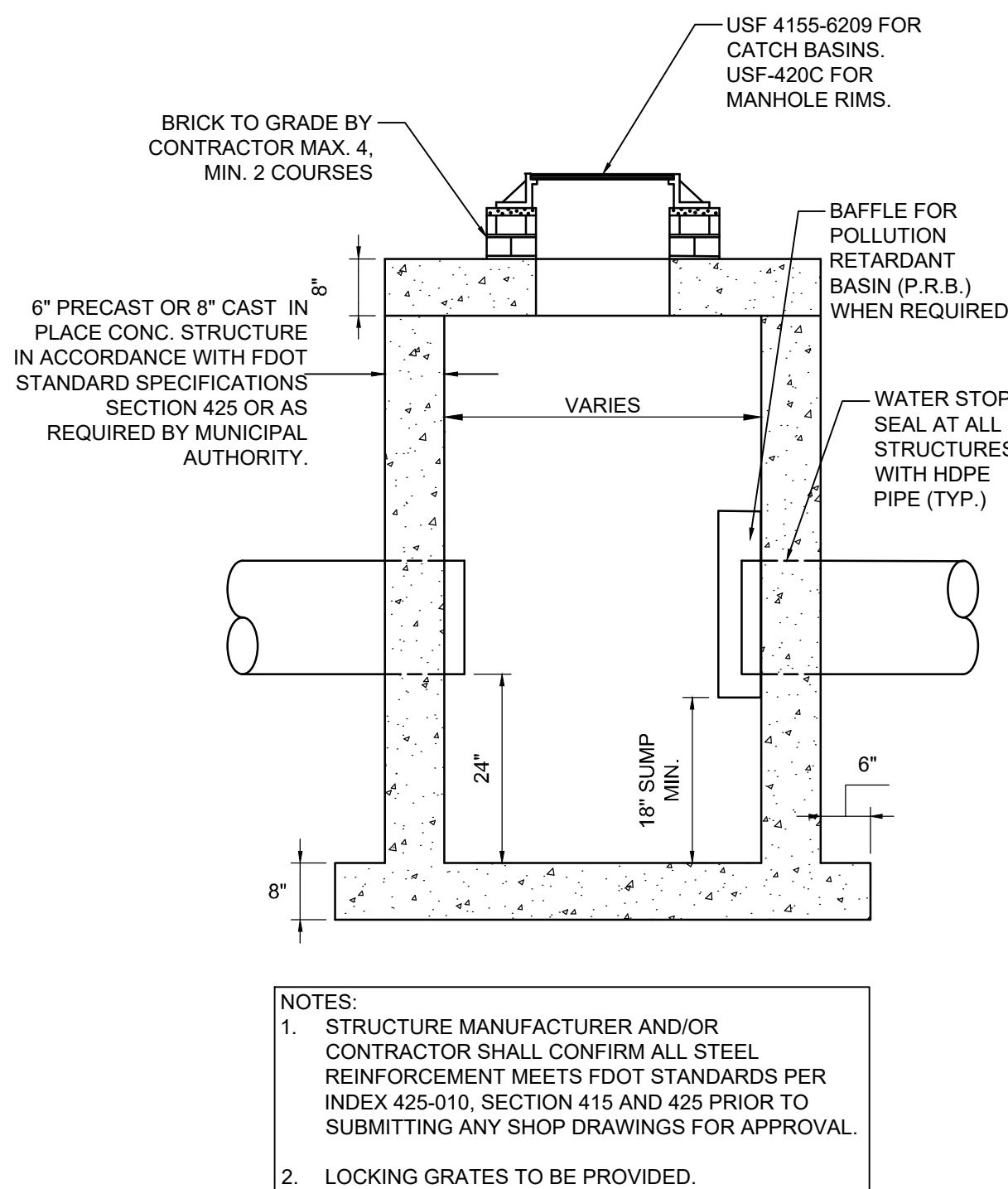
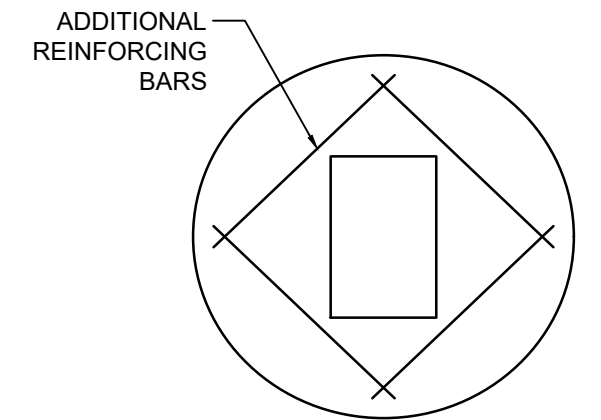


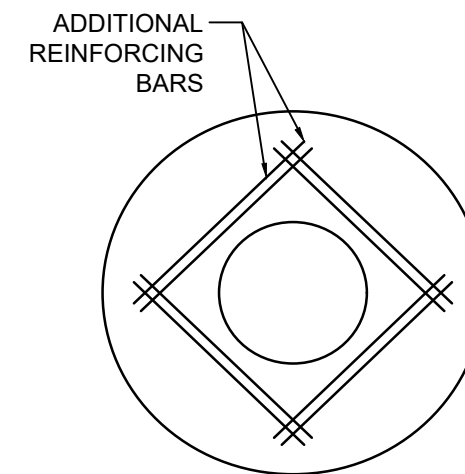
CURB & GUTTER FLARED AND STRAIGHT ENDS



**CATCH BASIN / DRAINAGE
MANHOLE DETAIL**

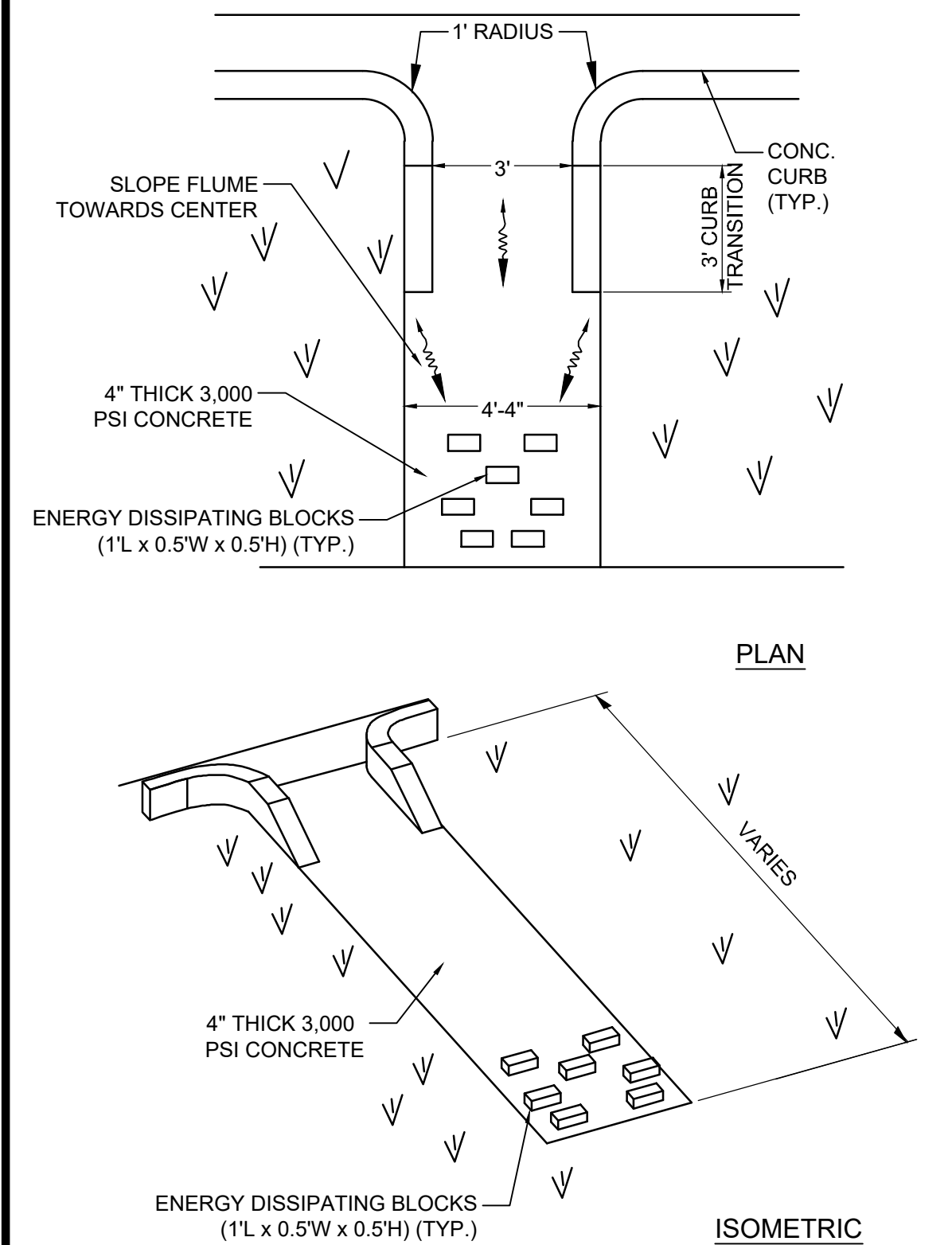


PLAN VIEW
TOP SLAB
FOR CATCH BASINS

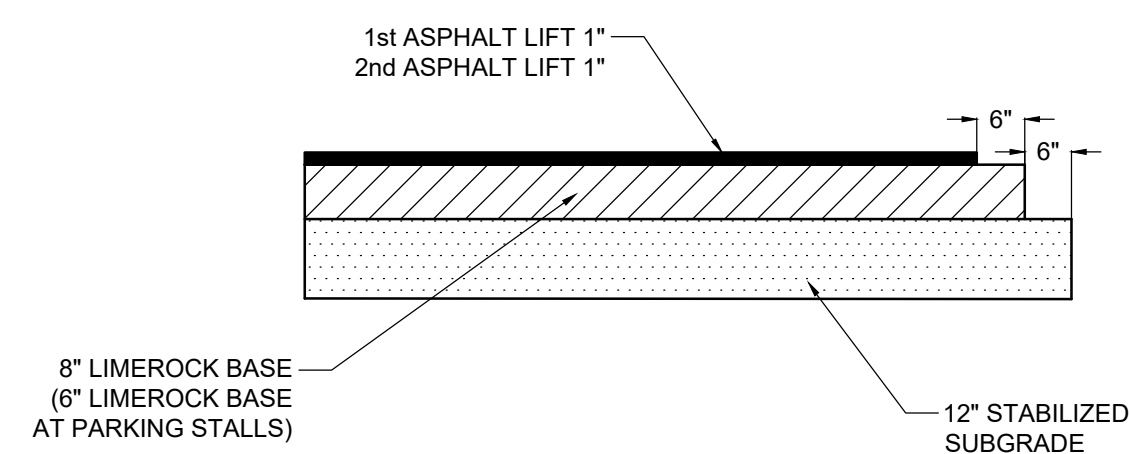


PLAN VIEW
TOP SLAB
FOR MANHOLES

3 CATCH BASIN / MANHOLE FRAME DETAIL



4 CONCRETE FLUME DETAIL



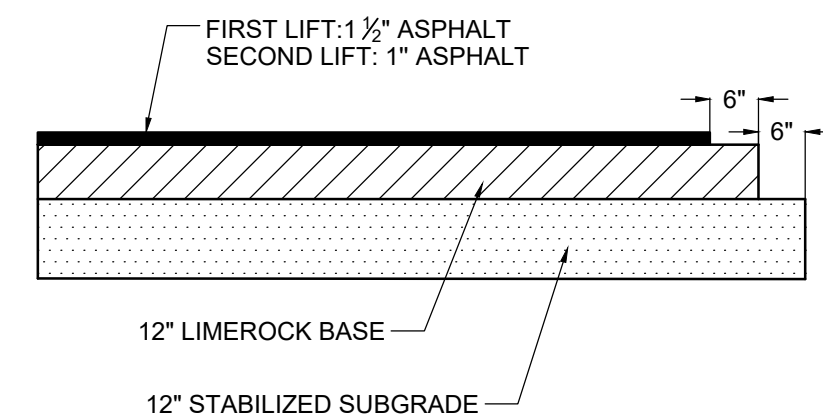
ASPHALTIC CONCRETE VEHICULAR:
FIRST LIFT - 1" FDOT - SP 9.5 (FINE MIX). SECOND (FINAL) LIFT - 1" FDOT - SP 9.5 (FINE MIX).
ASPHALT SURFACE COURSE SHALL CONFORM TO THE REQUIREMENTS OF FDOT STANDARDS SPECIFICATIONS SECTIONS 330 AND 334. SECOND LIFT OF ASPHALT SHALL NOT BE PLACED UNTIL FINAL LANDSCAPE/HARDSCAPE HAS BEEN INSTALLED.

PRIME AND TACK COAT:
LIMEROCK BASE COURSE SHALL CONFORM TO THE REQUIREMENTS OF FDOT STANDARDS SPECIFICATIONS SECTION 300.
APPLICATION RATES:
PRIME COAT - 0.10 GALLONS PER SQ. YD.
TACK COAT - 0.08 GALLONS PER SQ. YD.

BASE:
8" 6" LIMEROCK BASE COMPACTED TO 98% OF MAXIMUM DENSITY (AASHTO T-180).
LIMEROCK BASE TO CONFORM WITH THE REQUIREMENTS OF FDOT SPECIFICATIONS SECTIONS 200 AND 911.

SUBGRADE:
12" STABILIZED SUBGRADE COMPACTED TO 98% OF MAXIMUM DENSITY (AASHTO T-180);
MINIMUM LBR = 40.

5 STANDARD ASPHALT PAVEMENT DETAIL



ASPHALTIC CONCRETE VEHICULAR:
FIRST LIFT - 1 1/2" FDOT - SP 12.5 (FINE MIX), SECOND (FINAL) LIFT - 1" FDOT - SP 9.5 (FINE MIX).
ASPHALT SURFACE COURSE SHALL CONFORM TO THE REQUIREMENTS OF FDOT STANDARDS
SPECIFICATIONS SECTIONS 330 AND 334. SECOND LIFT OF ASPHALT SHALL NOT BE PLACED
UNTIL FINAL LANDSCAPE/HARDSCAPE HAS BEEN INSTALLED.

PRIME AND TACK COAT:
LIMEROCK BASE COURSE SHALL CONFORM TO THE REQUIREMENTS OF FDOT STANDARDS
SPECIFICATIONS SECTION 300.
APPLICATION RATES:
PRIME COAT - 0.10 GALLONS PER SQ. YD.
TACK COAT - 0.08 GALLONS PER SQ. YD.

BASE:
12" LIMEROCK BASE COMPACTED TO 98% OF MAXIMUM DENSITY (AASHTO T-180), LIMEROCK
BASE TO CONFORM WITH THE REQUIREMENTS OF FDOT SPECIFICATIONS SECTIONS 200 AND
911.

SUBGRADE:
12" STABILIZED SUBGRADE COMPACTED TO 98% OF MAXIMUM DENSITY (AASHTO T-180);
MINIMUM LBR = 40.

HEAVY DUTY ASPHALT
PAVEMENT DETAIL

6

NOT TO SCALE

[illegible]

DESIGN DESIGN
DELIVERABLE: DEVELOPMENT
ISSUE DATE: 11/12/2025

PROJECT NUMBER: 2024-0559.0000
KEITH: 10647.01
DRAWN BY: CM
CHECKED BY: MP

Copyright (c) by SYNALOVSKI ROMANIK SAYE, LLC
All Rights Reserved.

SHEET TITLE:

PAVING, GRADING, AND DRAINAGE DETAILS

SHEET NUMBER:

CP-501